

---

# Trinity Baptist Church

---

Financial Report

Dec 2013 - Jan 2014

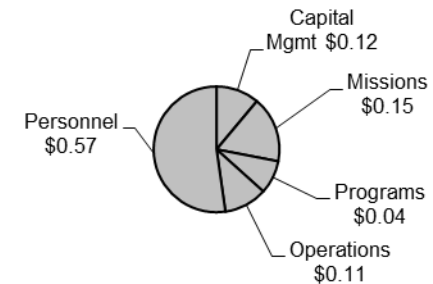
# Dec 2013

## *At a glance*

# +\$28,950

<b>Target Income</b>	<b>\$94,994.07</b>
<b>Actual Income</b>	<b>\$118,393.10</b>
<b>Actual Expenses</b>	<b>(\$82,440.58)</b>
<b>Actual Gain / Loss</b>	<b>\$35,952.52</b>
<b>Transfer to Escrow Savings</b>	<b>\$1,300.00</b>
<b>Loan Principal Paid</b>	<b>\$5,702.42</b>
<b>Net Gain / Loss Budget</b>	<b>\$28,950.10</b>

Where Your Dollar Went This Month



## Budget Highlights:

- Another Great December!
- 5 Sundays, year-end giving
- Expenses include Mission Trip Payment, Seasonal Benevolence

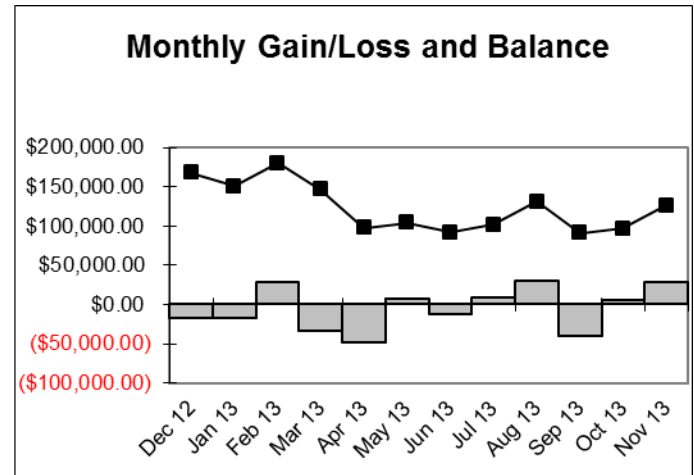
# Through Dec 2013

## General Fund

- \$59,671.80

Target Income	\$1,139,928.84
Actual Income	\$982,662.44
Actual Expenses	(\$963,482.46)
Actual Gain / Loss	\$19,179.98
Transfer to Escrow Savings	\$15,600.00
Loan Principal Paid	\$63,251.78
Net Gain / Loss Budget	(\$59,671.80)

Budget Balance	\$125,761.31
Designated Balance	\$80,423.06
Escrow Savings Balance	\$41,035.63
Loan Balance	(\$826,383.36)



- Average Loss of \$5000/month
- Underspent Budget by \$97,595

- Mortgage Balance < \$830K

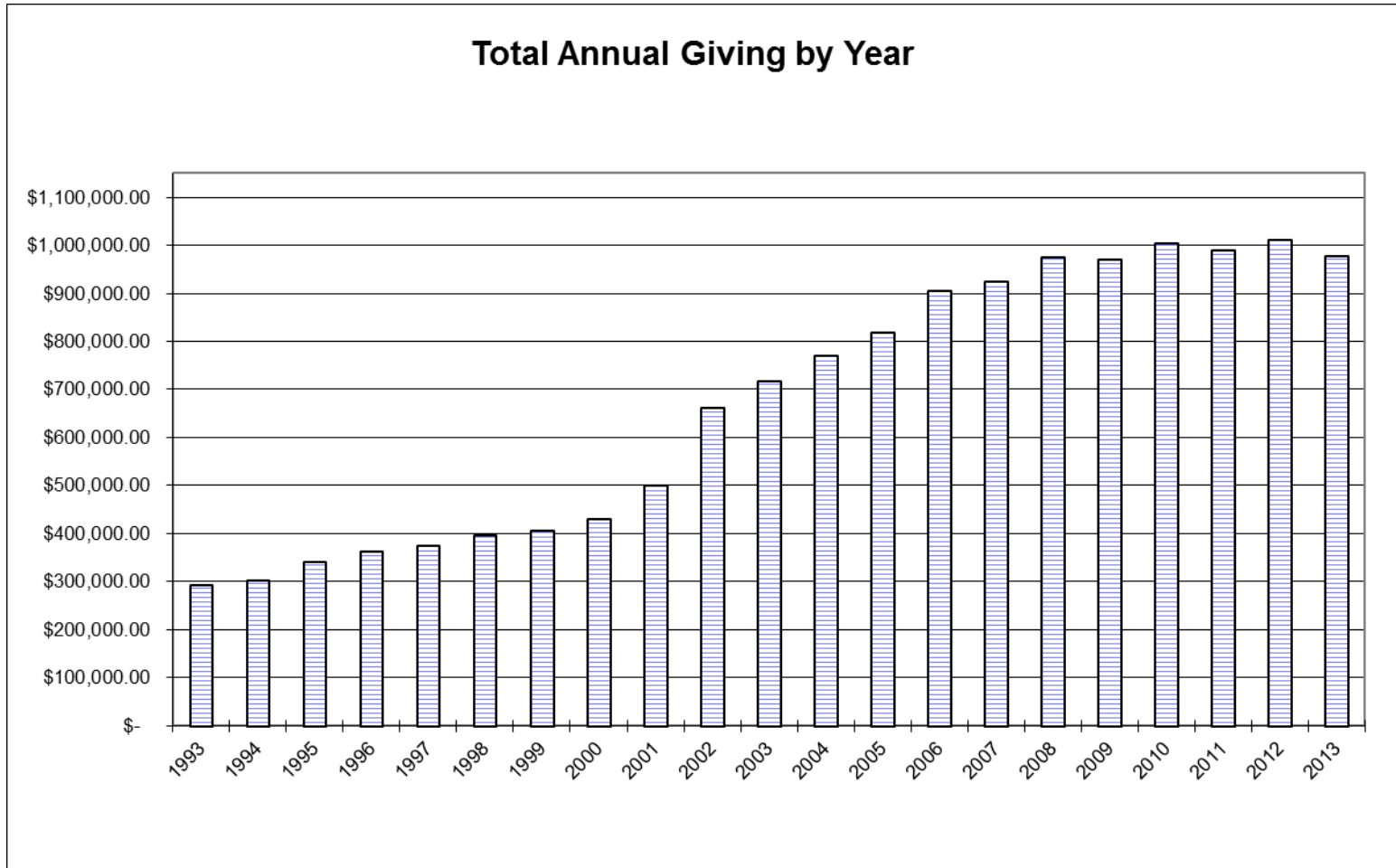
# Through Dec 2013 *Designated Funds*

- Designated giving > \$96K
- On-Going funds > \$72K, Mission Trips, Day Life, It's Time, Building Program
- Seasonal Giving > \$12K
- WPM Gift of \$10K

DESIGNATED FUNDS	New Balance
<b>Ongoing</b>	
Foreign Mission Trips	\$21,137.99
Day Life	\$2,048.37
In and Out	\$2,698.50
It's Time Ministry	\$14,837.74
Building Program	\$5,595.00
Domestic Mission Trips	\$0.00
Debt Reduction	\$0.00
Disaster Relief	\$986.88
Youth	\$697.00
<b>Seasonal</b>	
Annie Armstrong	\$178.00
CBF Easter	\$0.00
Lottie Moon	\$2,390.00
Timothy Cup	\$0.00
SS Kids / Shoe Boxes	\$0.00
CBF Christmas	\$5,722.00
Staff Gifts	\$3,030.00
<b>As Needed</b>	
Love Offerings	\$0.00
Music Gifts	\$2,554.76
Adult Choir	\$38.69
Divorce Care	\$1,000.00
Benevolent Offerings	\$103.45
Youth Group	\$525.53
Youth Passport	\$0.00
Local Ministries	\$125.49
Weekday Pre-School	\$10,000.00
Miscellaneous	\$6,753.66
Organ	\$0.00
Youth Choir	\$0.00
<b>Designated Fund Balances</b>	<b>\$80,423.06</b>

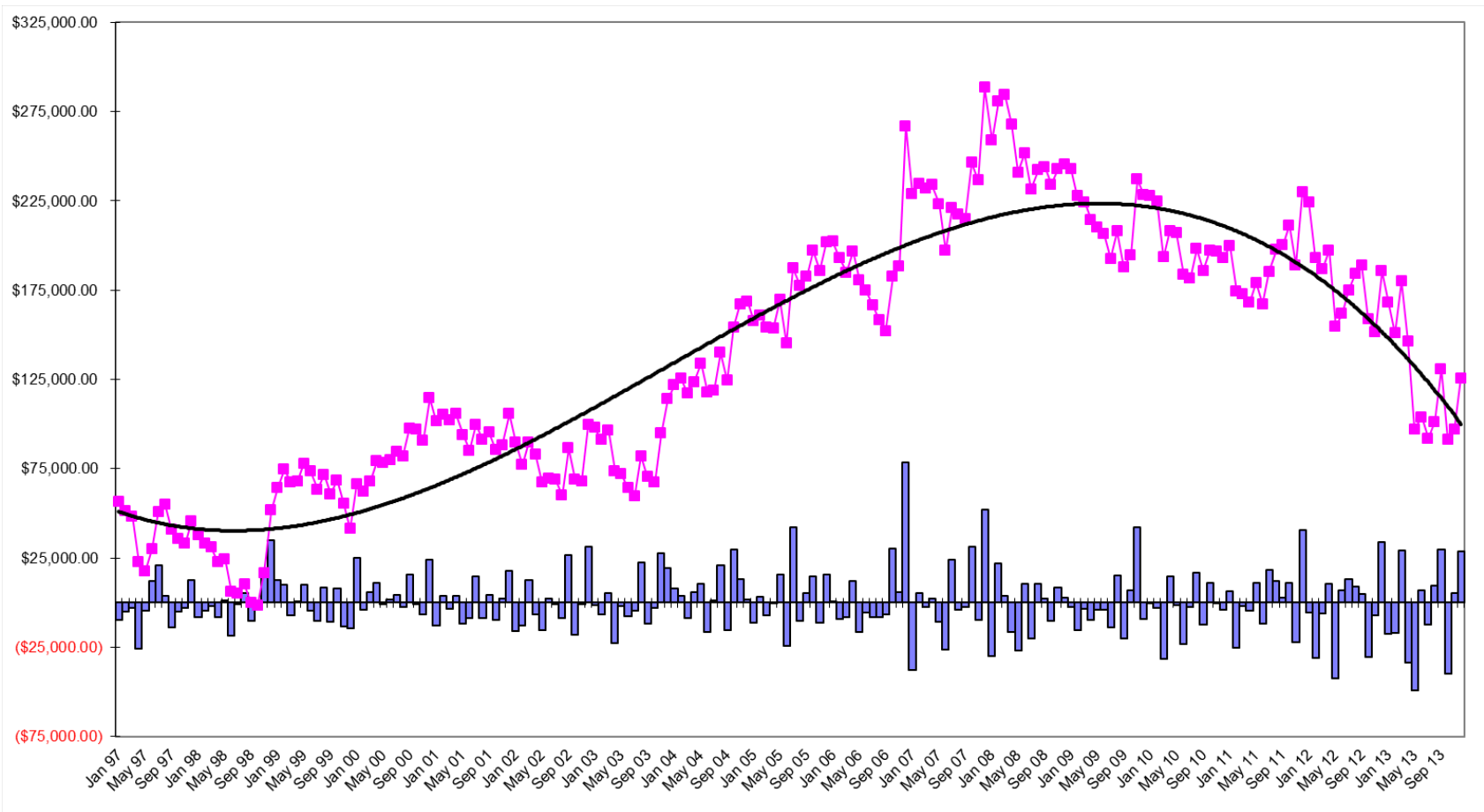
# Giving By Year – 1993 to 2013

## *Total Annual Giving by Year*



# The Big Picture – 1997 to 2013

## *General Fund Balance and Monthly Change*



# 2013 Financial Summary

*General Fund*

Budget	\$1,139,929	
Budget Actual Expenses	\$1,042,334	(91%)
Budget Income	\$982,662.44	(86%)
General Fund Gifts	\$978,000.79	
Receipt		
CBF	\$525,341	(54%)
SBC	\$78,414	(8%)
Unmarked	\$374,246	(38%)
Allocation		
CBF	\$850,391	(87%)
SBC	\$127,609	(13%)
Other Budget Income	\$4,462	

# 2013 Financial Summary

## *Designated Funds*

Mission Trips, Foreign	\$37,393
Day Life	\$21,239
Debt Reduction	\$4,030
Seasonal Gifts	\$12,002
WPM	\$10,000
Building Program	\$3,285
Mission Trips, Domestic	\$2,721

*Only selected funds are presented...*



# 2013 Financial Summary

*Mortgage*

Beginning Mortgage Balance	\$889.635
Principal Payments	(\$63,252)
Ending Mortgage Balance	\$826.383

# 2013 Financial Achievements

- General fund giving \$978,000 with designated giving of \$96,552
- Expenses held to 91% of budget
- 2014 budget reduced by 11%
- Year End Seasonal Giving topped \$8,000
- Continued to receive debt reduction and building program gifts

# 2013 Financial Under-Achievements

- Income was below target by \$157,266
- Lost \$59,672 for the year
- Fifth year out of last six that we have overspent income

# 2014 Financial Challenges

- An additional \$34,454 in gifts will be needed to meet 2014 budget
- Missions giving is reduced, so to return to previous levels will require an additional \$34K
- We have a mission trip to the Dominican Republic that will require our support
- Transfers to Escrow Savings Suspended for 2014

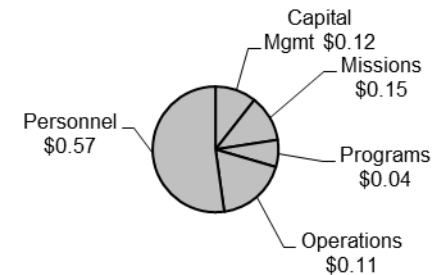
# Jan 2014

## *At a glance*

# - \$7,909

Target Income	\$84,371.17
Actual Income	\$72,022.68
Actual Expenses	(\$75,030.42)
Actual Gain / Loss	(\$3,007.74)
Transfer to Escrow Savings	\$0.00
Loan Principal Paid	\$4,901.75
Net Gain / Loss Budget	(\$7,909.49)

Where Your Dollar Went This Month



### Budget Highlights:

- New Missions giving
- Utility Cost High
- Property Insurance
- \$10K Gift for Mission Trip